

Boardwalk

# Richard

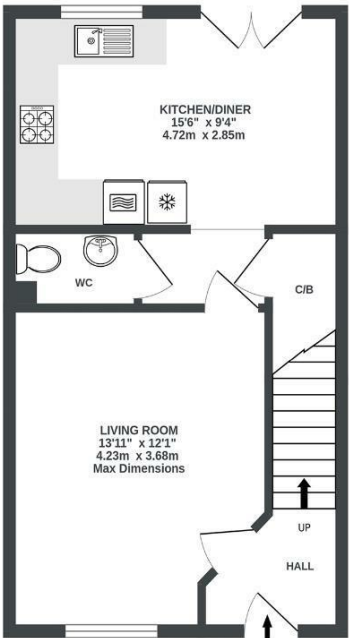
STOKE GIFFORD, BRISTOL

## Richard Stephens Road STOKE GIFFORD

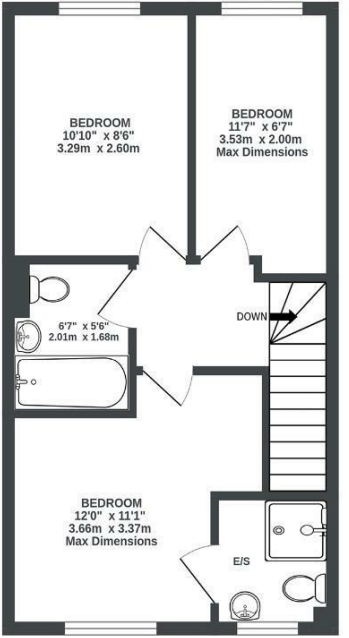
APPROXIMATE FLOOR AREA  
75.3 SQM / 811 SQFT



GROUND FLOOR  
411 sq.ft. (38.2 sq.m.) approx.



1ST FLOOR  
400 sq.ft. (37.1 sq.m.) approx.



Illustrations are for reference purposes only, measurements are approximate, not to scale.

**Boardwalk**

# Richard

STOKE GIFFORD, BRISTOL



£375,000



3 Bedrooms



BS16 1QF



3 Bathrooms

*"We're in a quiet location and have so many things on our doorstep here; from Stoke Park and Snuff Mills for peaceful walks out in nature, to Fishponds and Cheswick Village for meeting friends. We love the fact we can get to the centre so quickly for theatre shows, gigs and nightlife, but can also drive a short distance to more rural locations for days out exploring. It's been the perfect location to enjoy every aspect of life and all that Bristol has to offer."*

